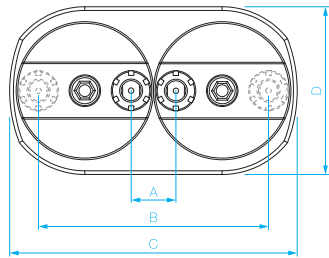
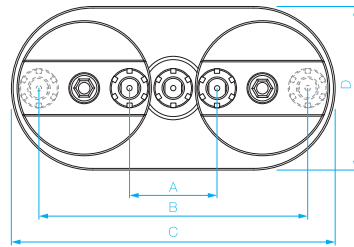


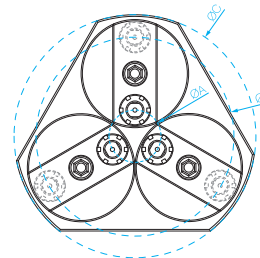
## CMX-/2



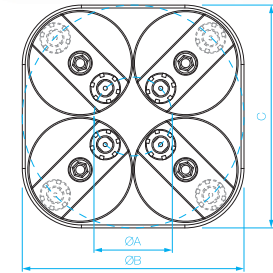
## CMX-/L3



## CMX-/3



## CMX-/4



CMX	A	B	C	D		Steel	Cast			RPM	KG
12/2	12	72	92	52							0.9
12/L3	24	84	104	52							1.2
12/3	Ø18.5	Ø78.5	Ø100	-	ER-8	4	5	M3	1:1	4.000	1.4
12/4	Ø29.5	Ø89.5	Ø111	-							2.0
18/2	18	98	122	75							2.1
18/L3	36	116	140	75							3.2
18/3	Ø27	Ø107	Ø130	-	ER-11	6	7	M5	1:1	3.500	3.6
18/4	Ø42	Ø122	Ø148	-							4.5
24/2	24	124	155	90							4.5
24/L3	48.5	148.5	180	90							5.1
24/3	Ø35.5	Ø135.5	Ø166	-	ER-16	8	10	M6	1:1	3.500	6.3
24/4	Ø55	Ø155	Ø185	-							7.5
33/2	33	160	203	106							6.3
33/L3	66	193	236	106							8.4
33/3	Ø48	Ø175	Ø217	-	ER-20	13	14	M12	1:1	3.000	9.5
33/4	Ø73	Ø200	Ø242	-							13.9