

CNC facing & boring heads and attachments



for milling, boring, portal machines & vertical lathes



“Perfect work requires passion, precision
and well designed and reliable tools.
Madaula’s focus
is to supply these tools to world-wide industry”





Boring & Facing head
CNC Controlled

Main features

Coolant through the body, delivered to the tool

Sealing air blow

Custom designs under request

Manual or automatic load

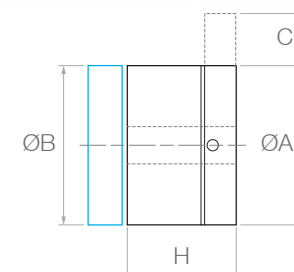
Oil-mist / grease lubrication

Mass balanced by counterweights

Siemens motor (others under request)



| Product | ØA mm | ØB mm | Stroke (C) mm | Speed RPM - U/min | Precision | Weight kg | H mm | Flanged to any machine |
|------------|----------|----------|------------------|----------------------|-----------|--------------|---------|------------------------|
| G.074.500 | 500 | 500 | 200 | 310 | H7 | 320 | 303 | |
| G.074.630 | 630 | 500 | 200 | 250 | H7 | 530 | 303 | |
| G.074.800 | 800 | 800 | 280 | 200 | H7 | 995 | 483 | |
| G.074.1000 | 1000 | 800 | 300 | 160 | H7 | 1170 | 483 | |



Other measures on request

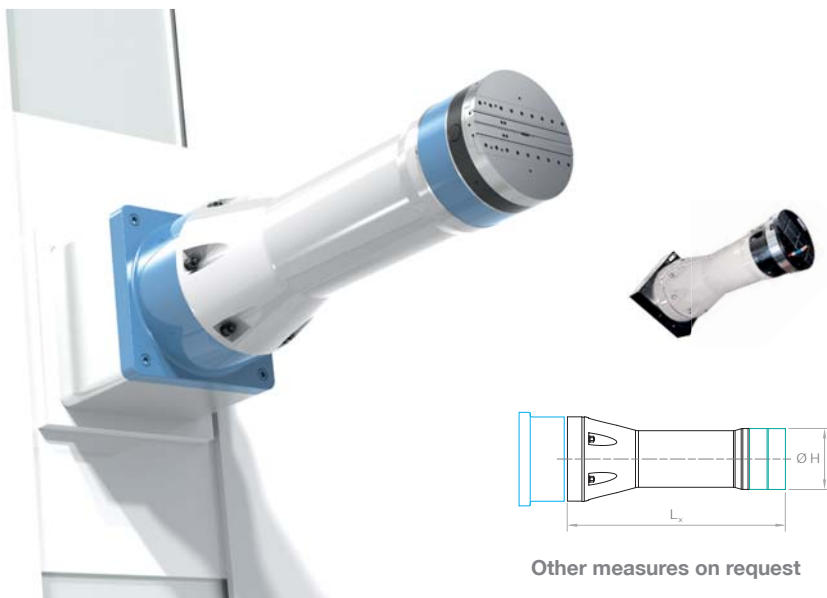
G 075

Straight CNC facing head holder

Main features

All cables and pipes are internal and not visible

L_x Length options



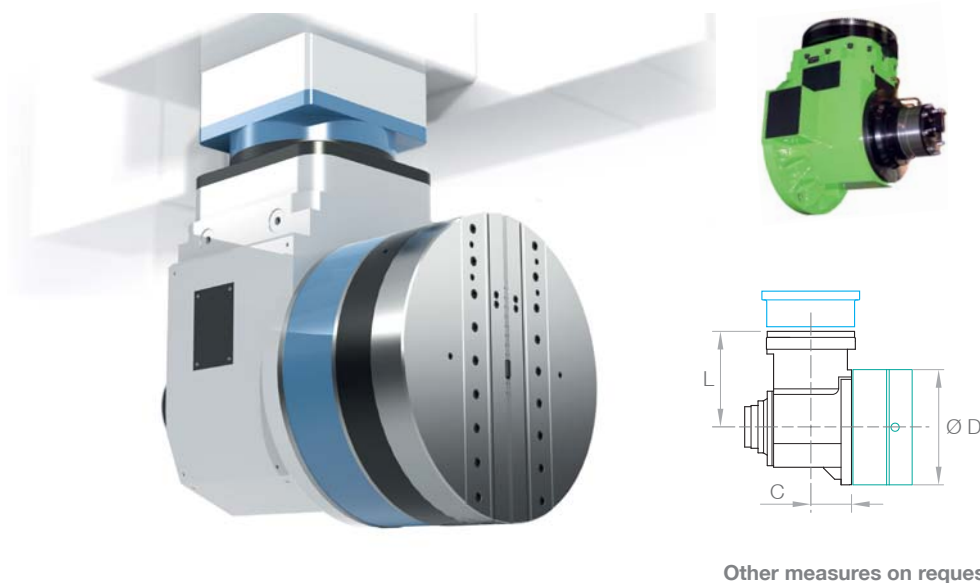
G 180

90° Attachment for CNC facing heads

Main features

Hydraulic brake

All cables and pipes are internal and not visible



| Product | Power kw | Torque Nm | Speed RPM - U/min | Ratio | Ø H mm | L ₁ mm | L ₂ mm | L ₃ mm |
|-----------|-------------|--------------|----------------------|-------|-----------|----------------------|----------------------|----------------------|
| G.075.500 | 30 | 4.000 | 300 | 1:1 | 500 | 300 | 400 | 700 |
| G.075.630 | 40 | 5.500 | 250 | 1:1 | 630 | 300 | 400 | 700 |
| G.075.800 | 50 | 7.000 | 200 | 1:1 | 800 | 300 | 400 | 700 |

| Product | Ø CNC head | Power kW | Torque Nm | Speed RPM - U/min | Ratio | Weight kg | L mm | C mm |
|------------|------------|-------------|--------------|----------------------|-------|--------------|---------|---------|
| G.180.500 | 500 | 30 | 4.000 | 300 | 2:1 | 1.140 | 350 | 265 |
| G.180.630 | 630 | 40 | 5.500 | 250 | 2:1 | 1.610 | 415 | 265 |
| G.180.800 | 800 | 50 | 7.000 | 200 | 2:1 | 2.375 | 500 | 265 |
| G.180.1000 | 800 | 50 | 7.000 | 160 | 2:1 | 2.550 | 500 | 265 |

Wide range of solutions



Spindle speeders



Multispindle heads



High frequency spindles



Live tooling for CNC lathes



Live tooling for swiss type lathes



Angle heads